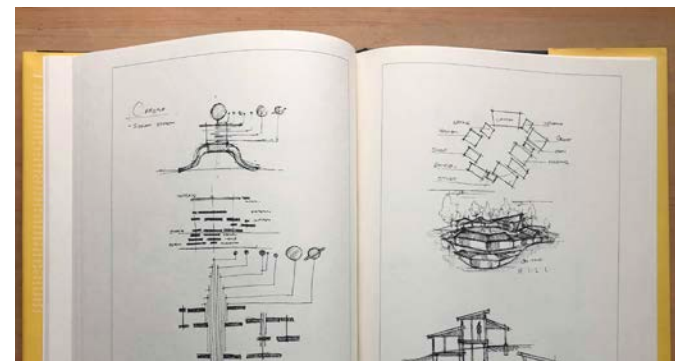
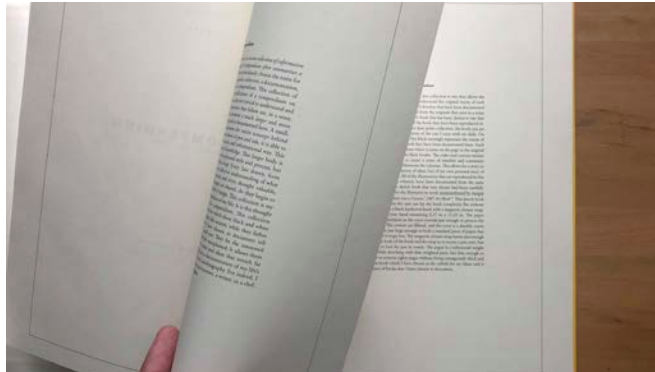
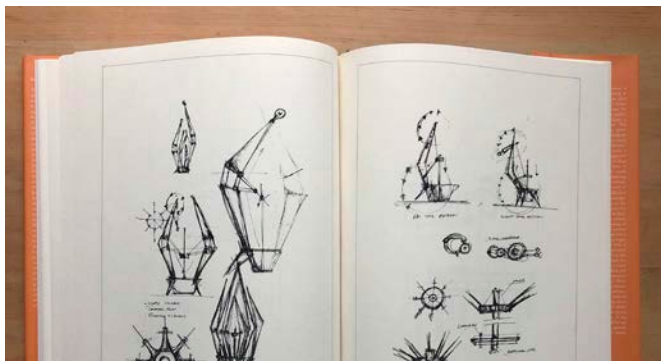




The Sketchbooks are a personal project of mine. Sketching is a critical part of my design process. It is where my conscious and unconscious thoughts take form. Each line representing an idea, a moment, or move. Sketching is so much more than simply representation, each illustration can be reinterpreted and learned from repeatedly. It is because of their flexibility I have decided to document each sketchbook in a series of volumes. Starting from my undergraduate studies and continuing unto the present. In short, *as the writers soul is in their poetry, so the designers is in their sketches.*



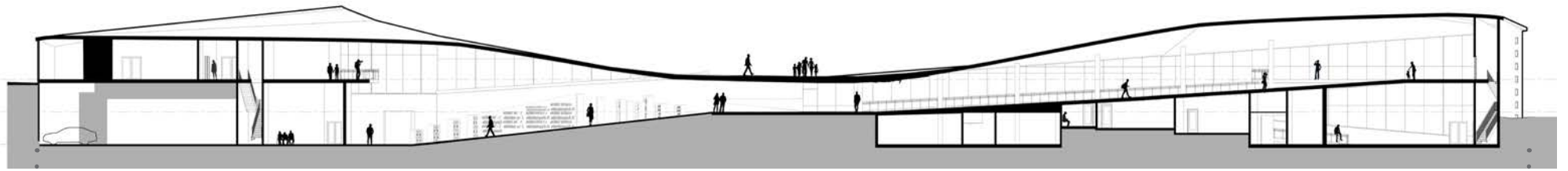
U R B A N .

T H E L I B R A R Y .

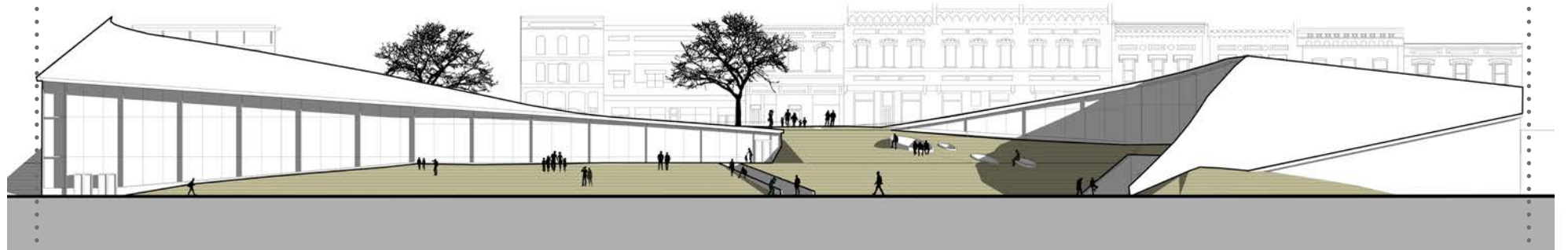
[H T T P S : / / W W W . Y O U T U B E . C O M /
W A T C H ? V = R K 6 B Z E X E 6 S O](https://www.youtube.com/watch?v=RK6BZEXE6SO)

T H E L I B R A R Y .

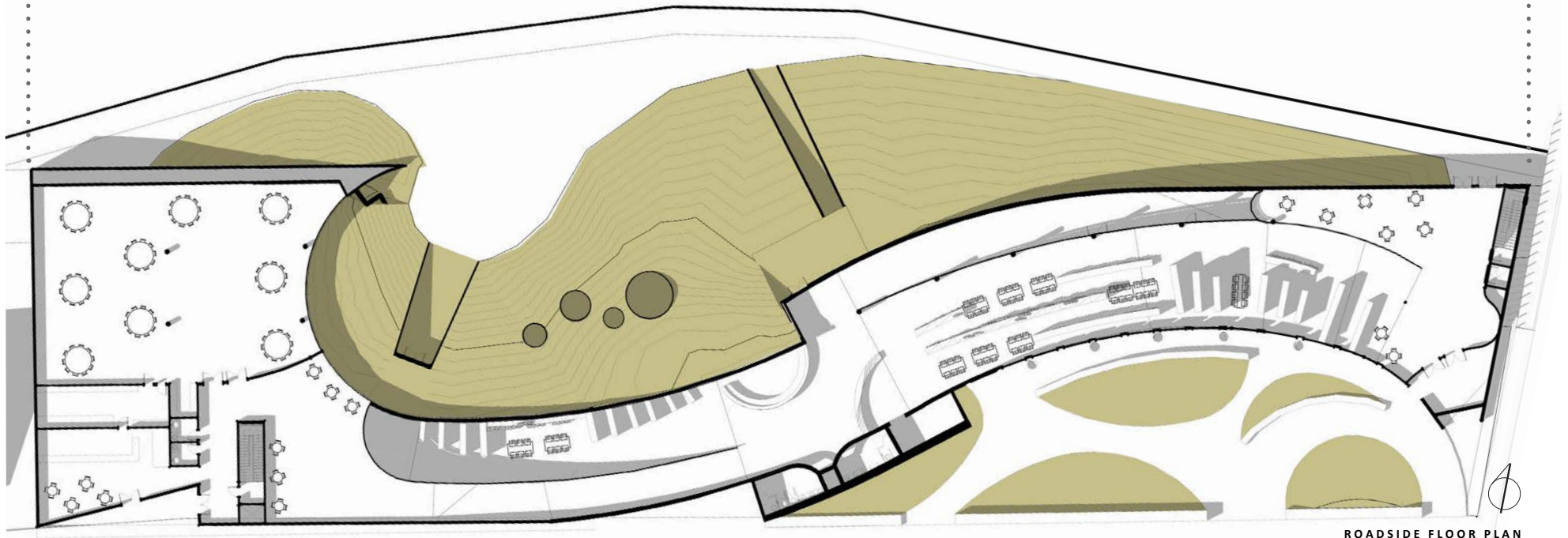
[H T T P S : / / W W W . Y O U T U B E . C O M /
W A T C H ? V = R K 6 B Z E X E 6 S O](https://www.youtube.com/watch?v=RK6BZEXE6SO)



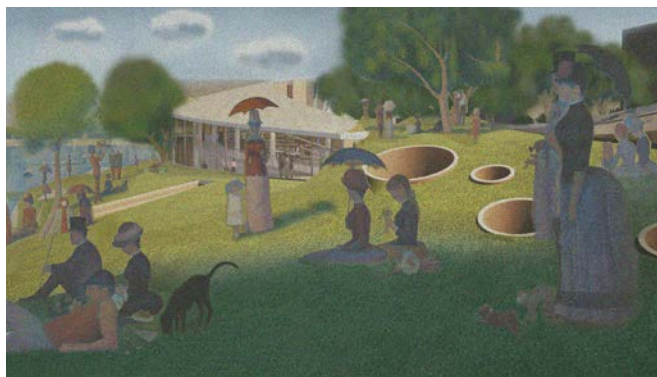
SECTION LOOKING NORTH

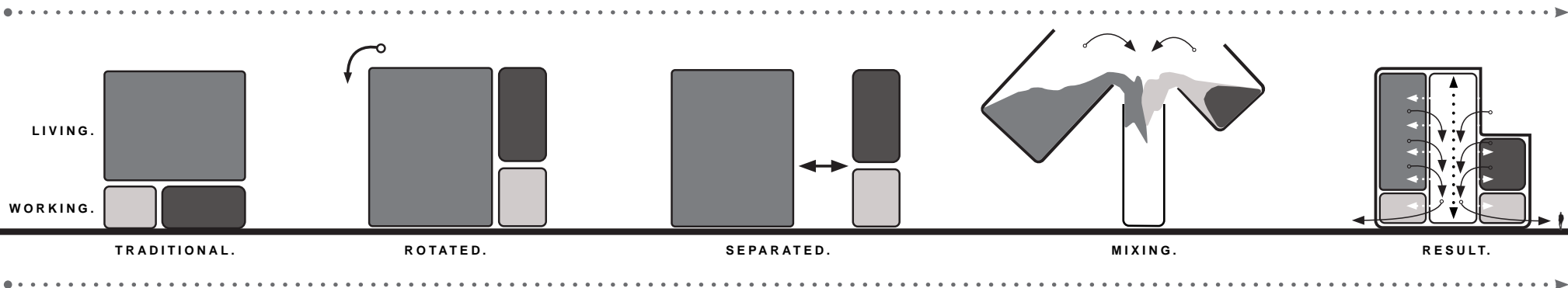
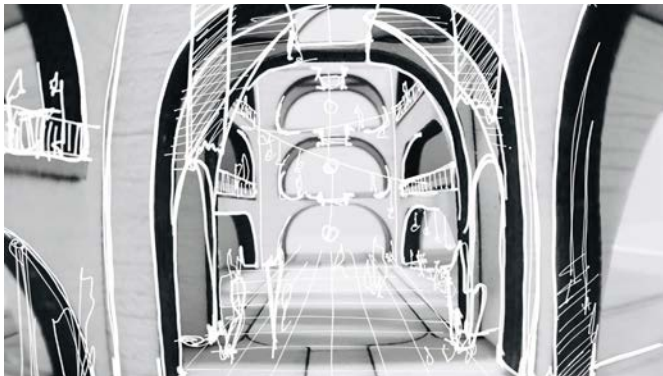
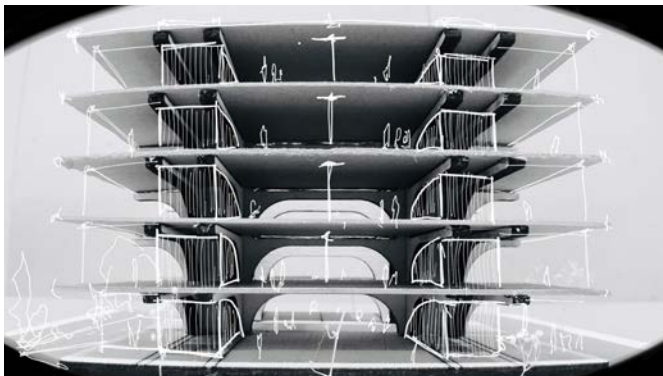
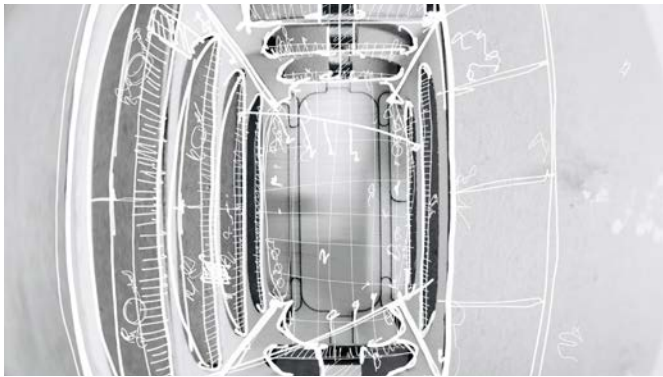


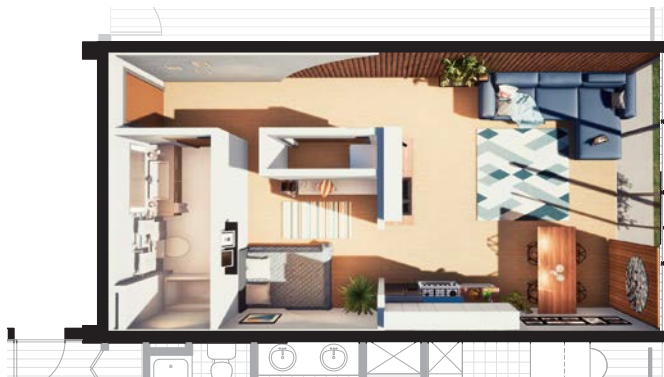
ELEVATION LOOKING SOUTH



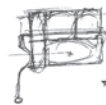
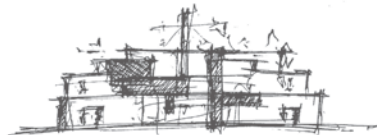
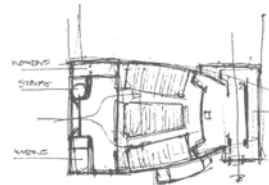
ROADSIDE FLOOR PLAN







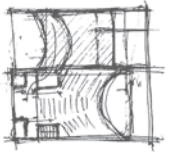
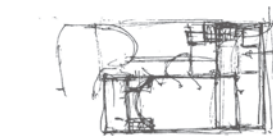
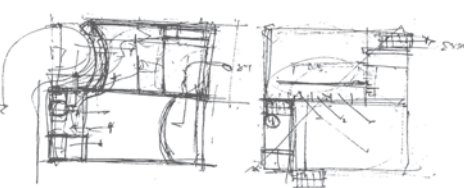
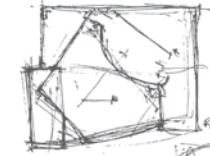
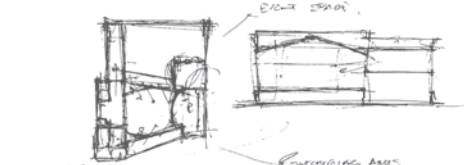
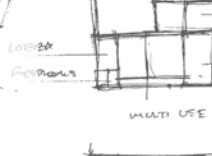
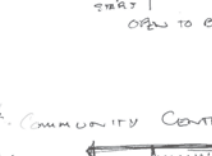
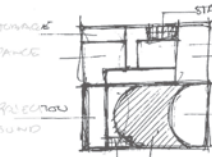
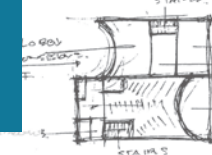
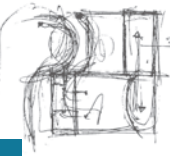
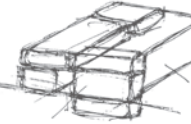
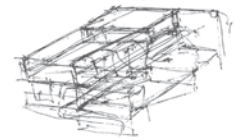
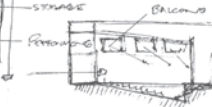
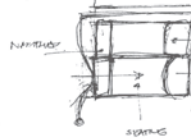
FOUR STAR THEATRE



PROBLEMS

- PARKING
- TRAFFIC FROM CITY LOTS (135 x 65 x 75)
- AFTER 5 228
- WEEKENDS

+ ON SITE MAX 22 (58 ACRES)
+ 44 (176 ACRES)

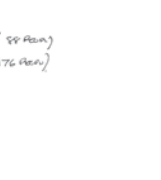
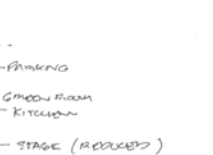
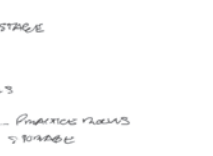
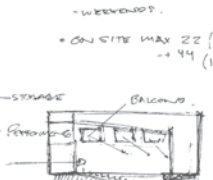
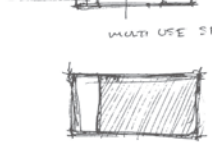
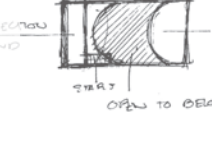
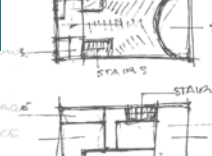
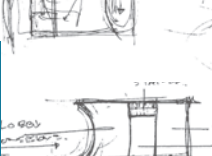
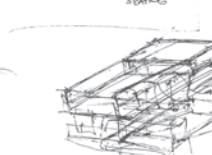
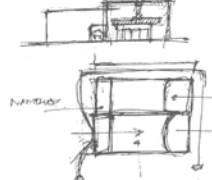
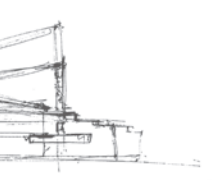
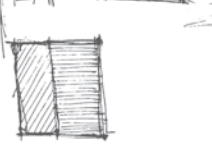
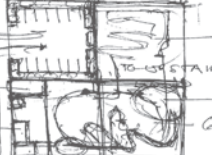
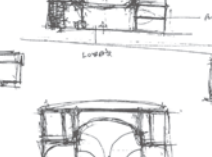
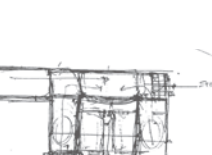
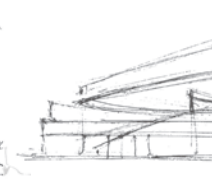
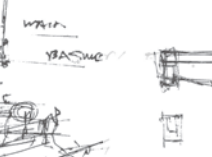
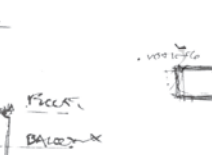
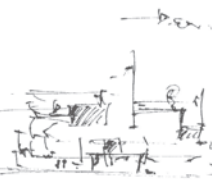
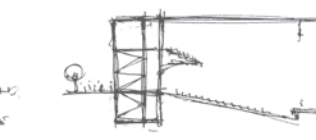
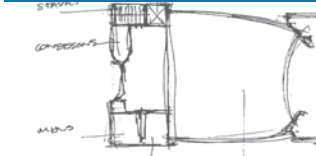
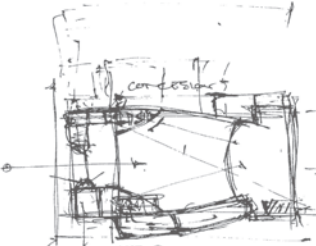


- PROBLEMS
- EVENT SPACE

PROBLEMS

- FORMING ARTS CENTER
- MUSIC, GAMES, PLAYS
- MULTI USE EVENT SPACE
- COMMUNITY CENTER

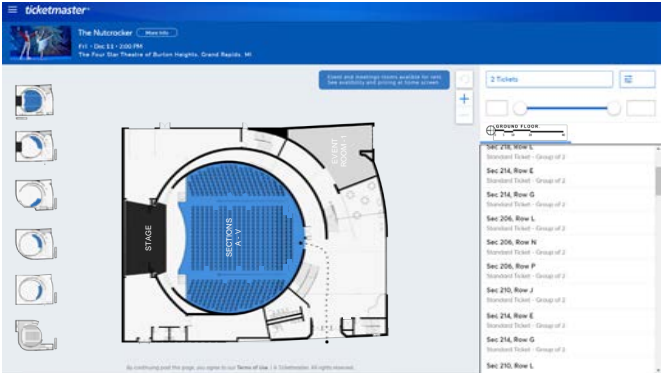
- FORMING ARTS
- SWIMMING POOL
- ART GALLERY
- TRAMPOLINE MATS
- MINI GOLF COURSE





- The Four Star Theatre is a historic cinema along the South Division Corridor in Grand Rapids.
- The theatre has gone under many renovations changing from a cinema, to a dance club, to a church. The current dilapidated state leaves it unoccupied and not an asset to the community.
- ▼





The image is a collage of numerous hand-drawn architectural sketches for a 'Spiral House'. The sketches are scattered across the page, with a central green rectangular box containing the title and a YouTube link. The sketches include various views of a house with a spiral ramp, including floor plans, elevations, and sections. Some sketches show the house integrated with a landscape, while others focus on the spiral form itself. There are also smaller, more abstract sketches of spiral shapes and structural details. A compass rose is visible in the upper center, and a circular diagram with angles is at the bottom center. The sketches are drawn in black ink on a white background.

SPIRAL HOUSE.

[HTTPS://WWW.YOUTUBE.COM/
WATCH?V=ZAKUG1G23UA](https://www.youtube.com/watch?v=ZAKUG1G23UA)



Spiral house is a study in simplicity of form and material. Consisting of just a single exterior wall, the form surrounds and lifts the small residence out from the ground. The entry sequence compresses the visitor before leading them into a small courtyard containing a shallow pool. This courtyard then leads into the main living space of the home. At its core is a wood burning fireplace which radiates heat into the brick core letting the whole space be filled with warmth.





BAKERS
RESIDENCE

SITE PLAN
TO ROAD

FIRST FLOOR

SECOND FLOOR

1. SKETCHING

POOR

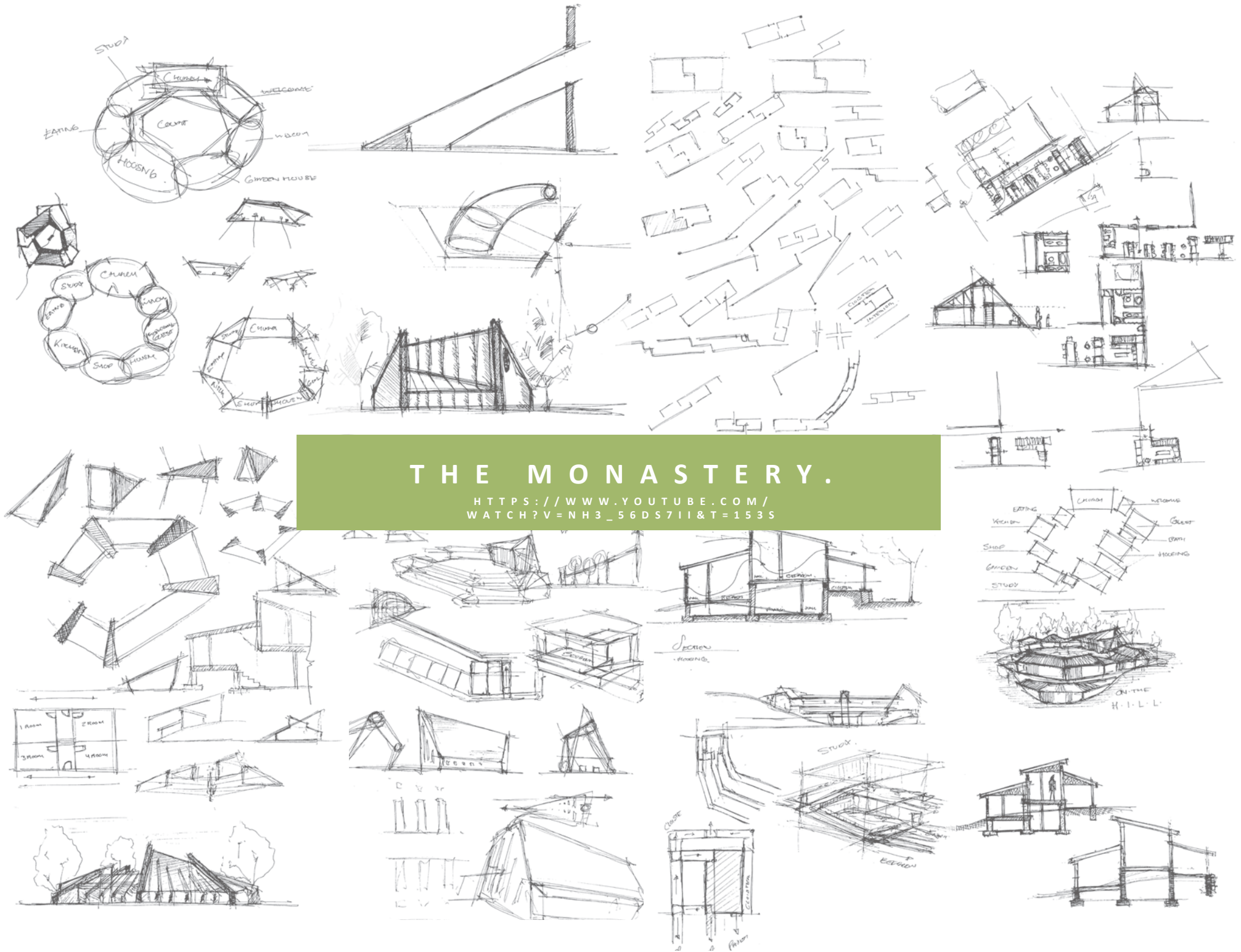
THE BAKERS.

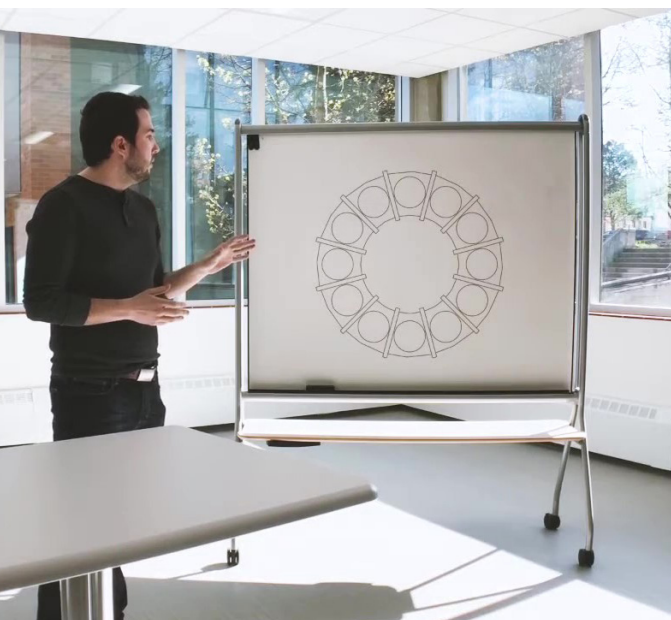
PLAN
SECTION
ELEVATION
DETAIL



Sitting secluded in a densely wooded area, the Baker residence turns its back on its entry drive. Its asymmetrical A-frame design allows for a large central gathering space with an open concept loft above. The harsh extrusion of the porch form projects the viewer out into the wilderness, rather than towards the entry for which they arrived.



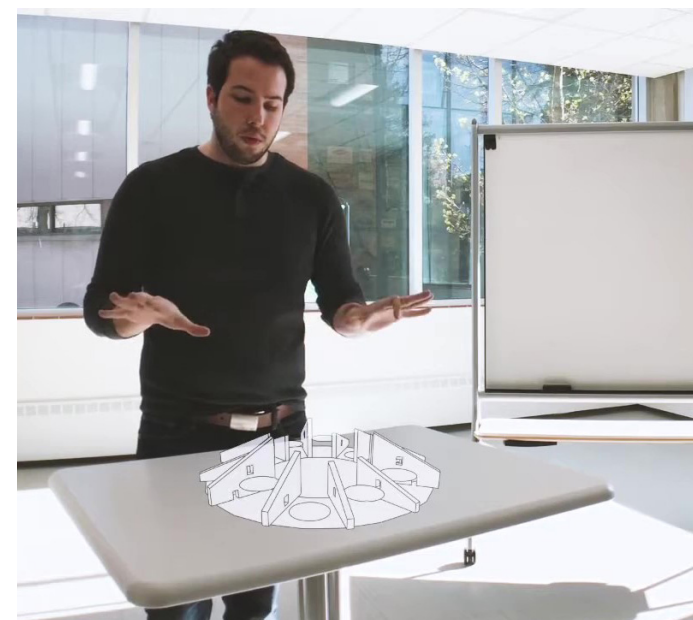




PROGRAM DIAGRAM

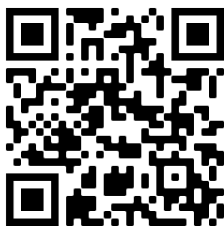


EXTRUSION OF FORM.

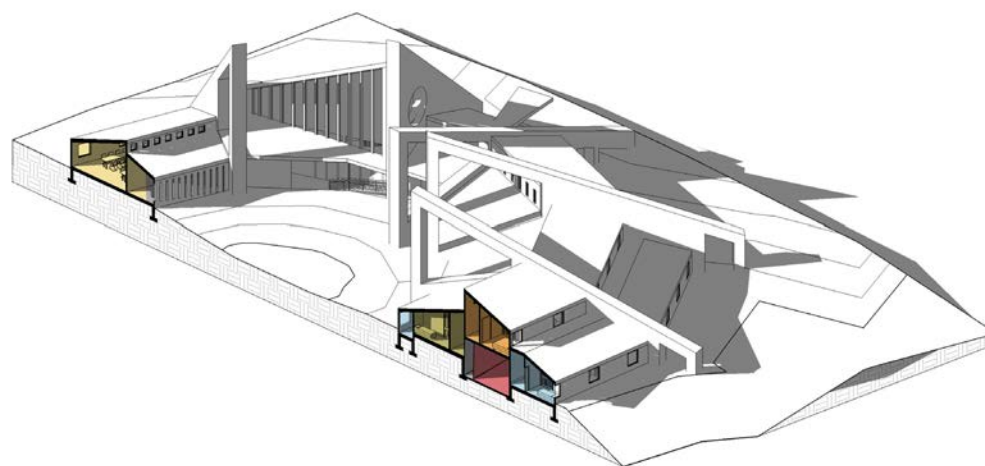


PROGRAMMATIC ADJACENCY

UNDERGRADUATE CAPSTONE
DIGITAL PRESENTATION | 2019



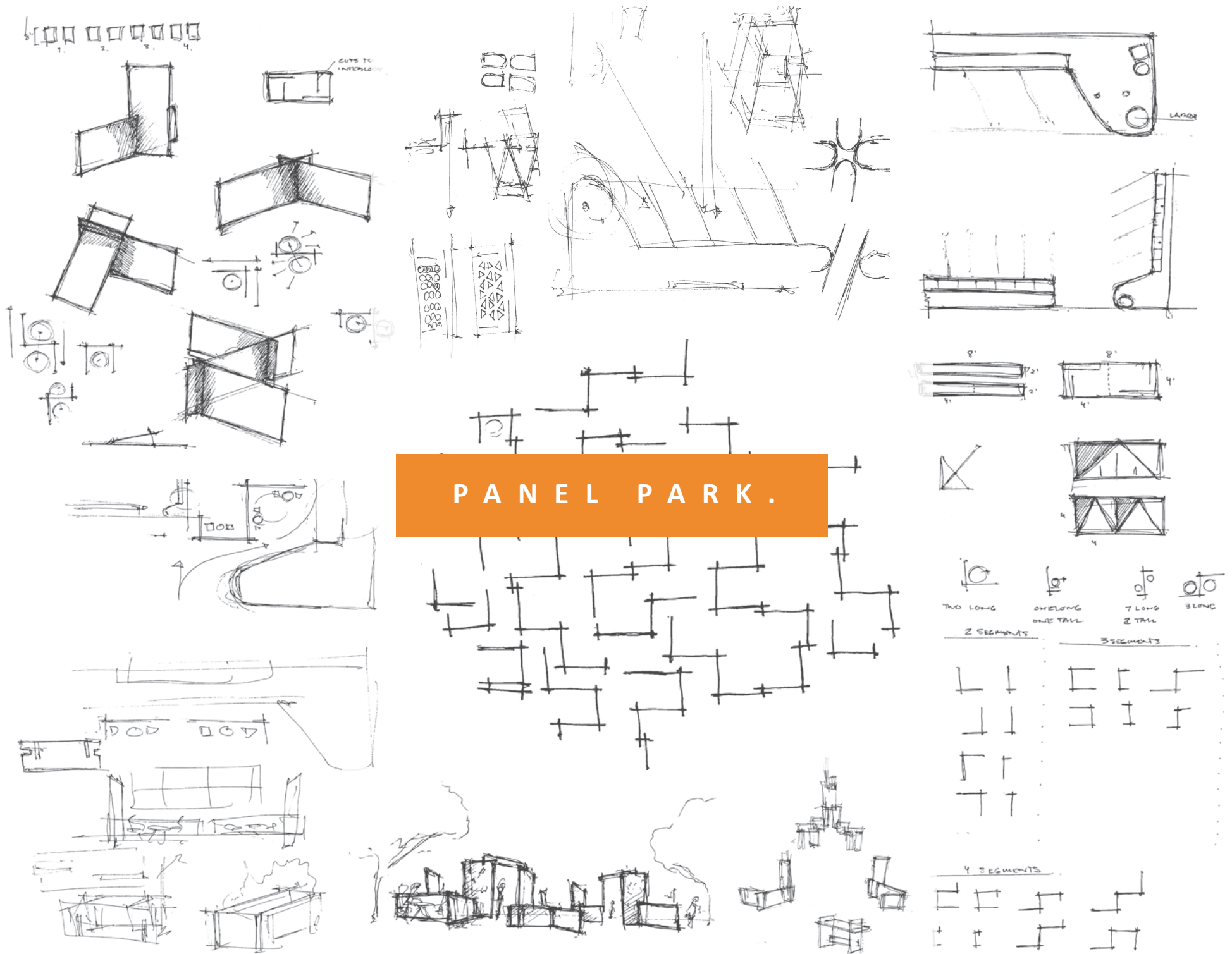
LINK TO VIDEO

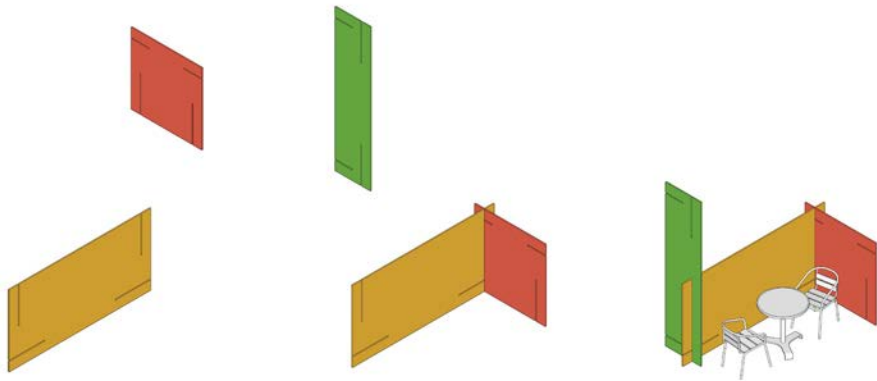




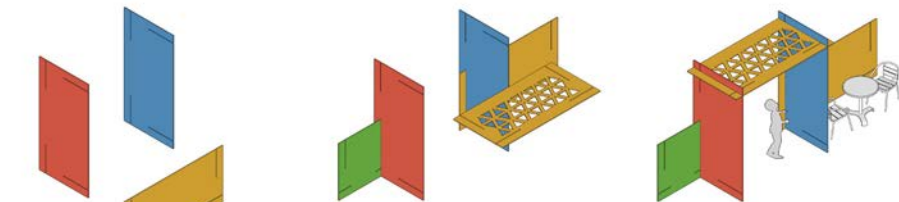
This modern take on a monastery was inspired by a new tradition of monasticism. This movement towards the new creation of monastic traditions called for a new type of architecture to house it. This circular form separates the architecture into an internal and external world. The twelve masonry masses represent the twelve disciples. The three circular extrusions represent the trinity and the unity of their presence. The resulting form is a mixed use united structure that promotes unity and peace



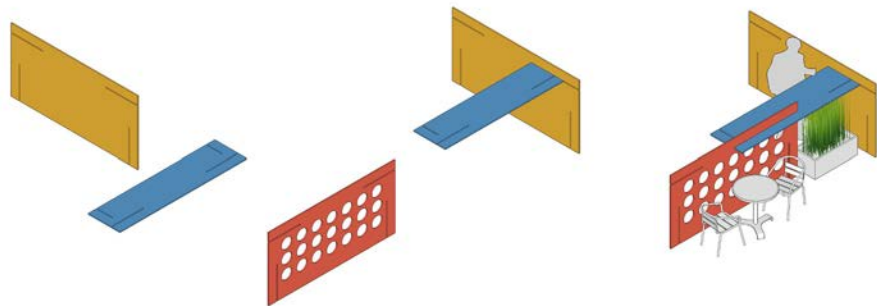




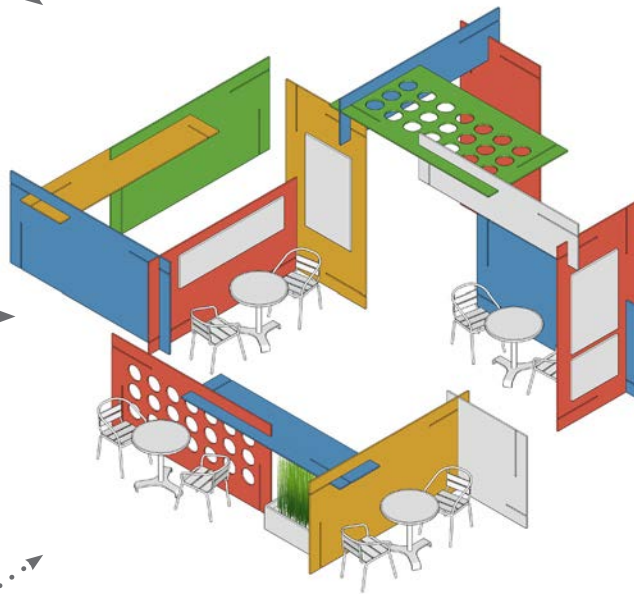
ENCLOSURE.



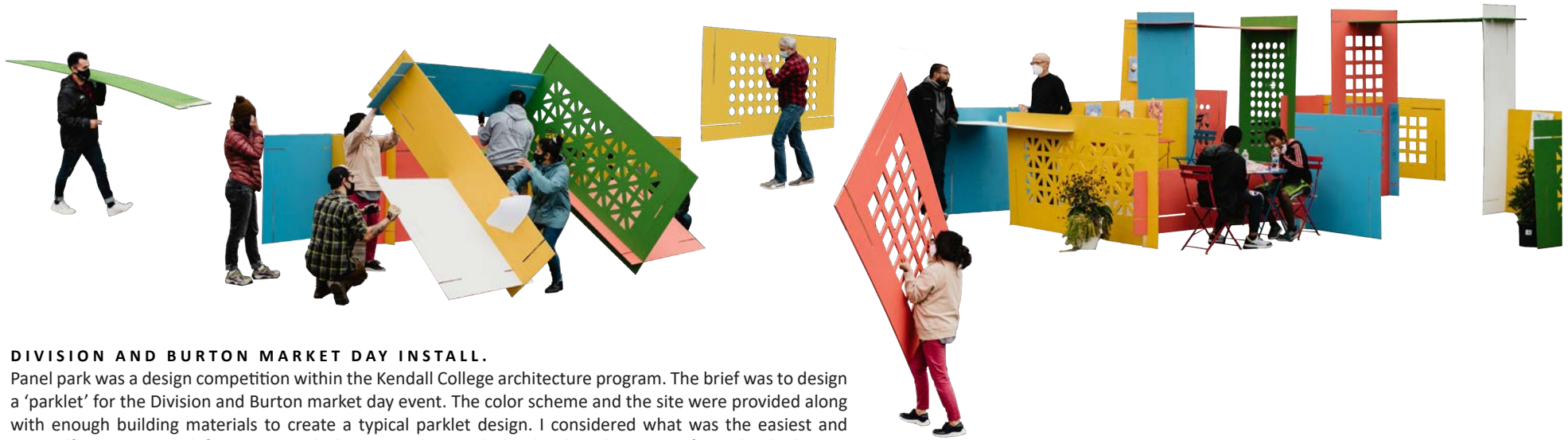
OVERHEAD.



ELEVATED.

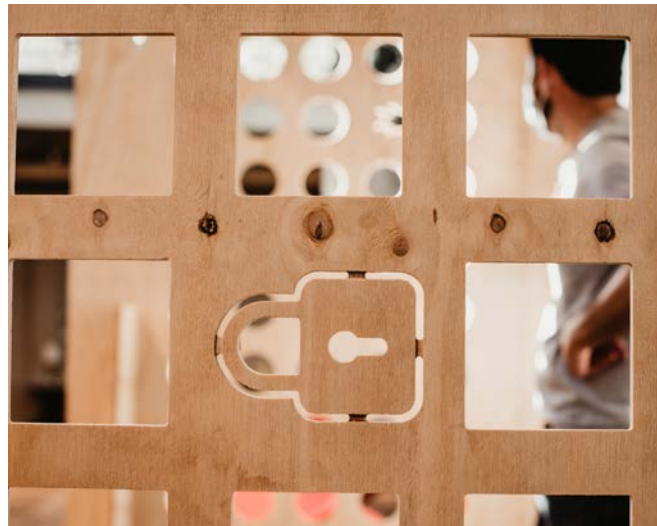


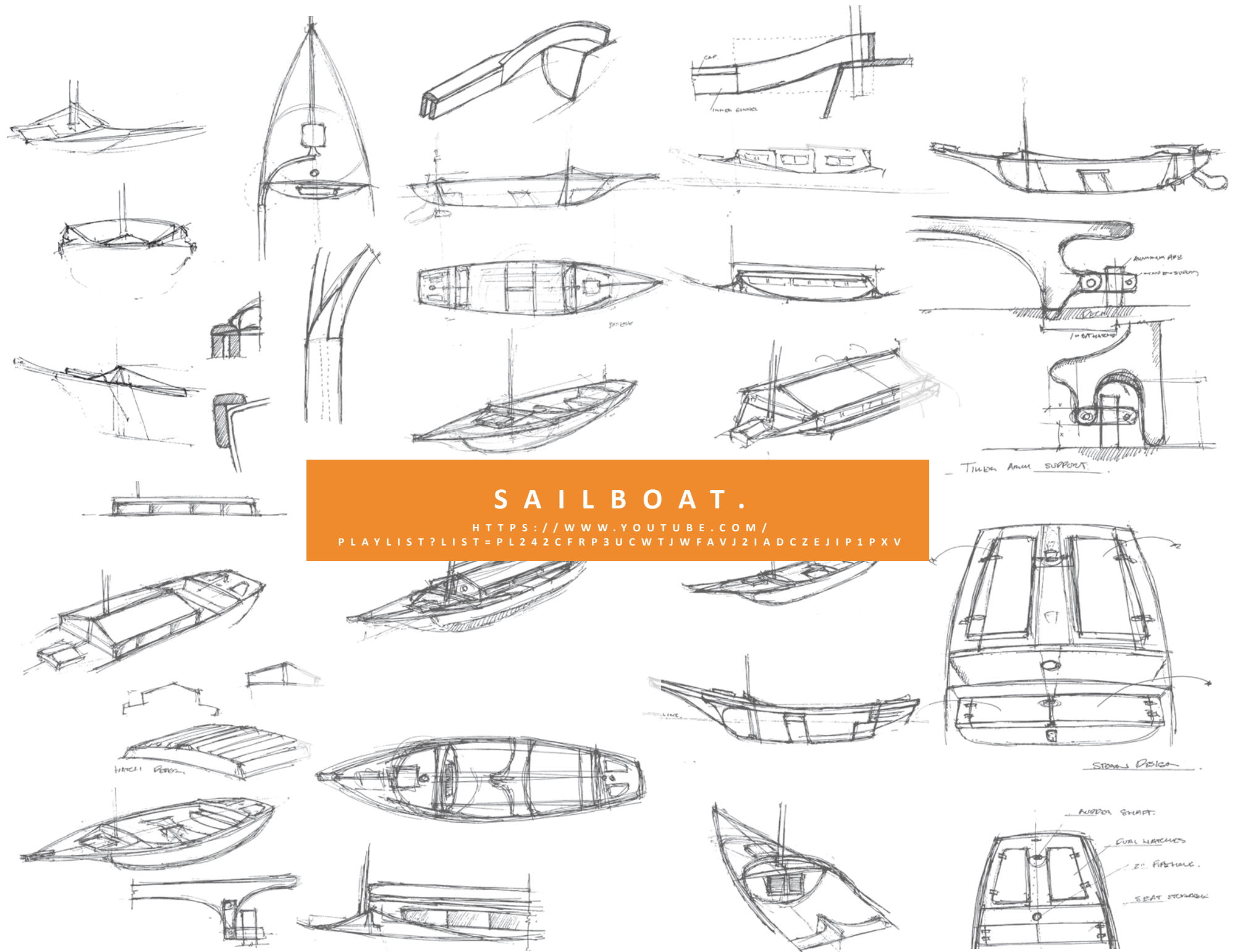
DESIGN INSTALLATION
(COLOR SCHEME DETERMINED BY EVENT)

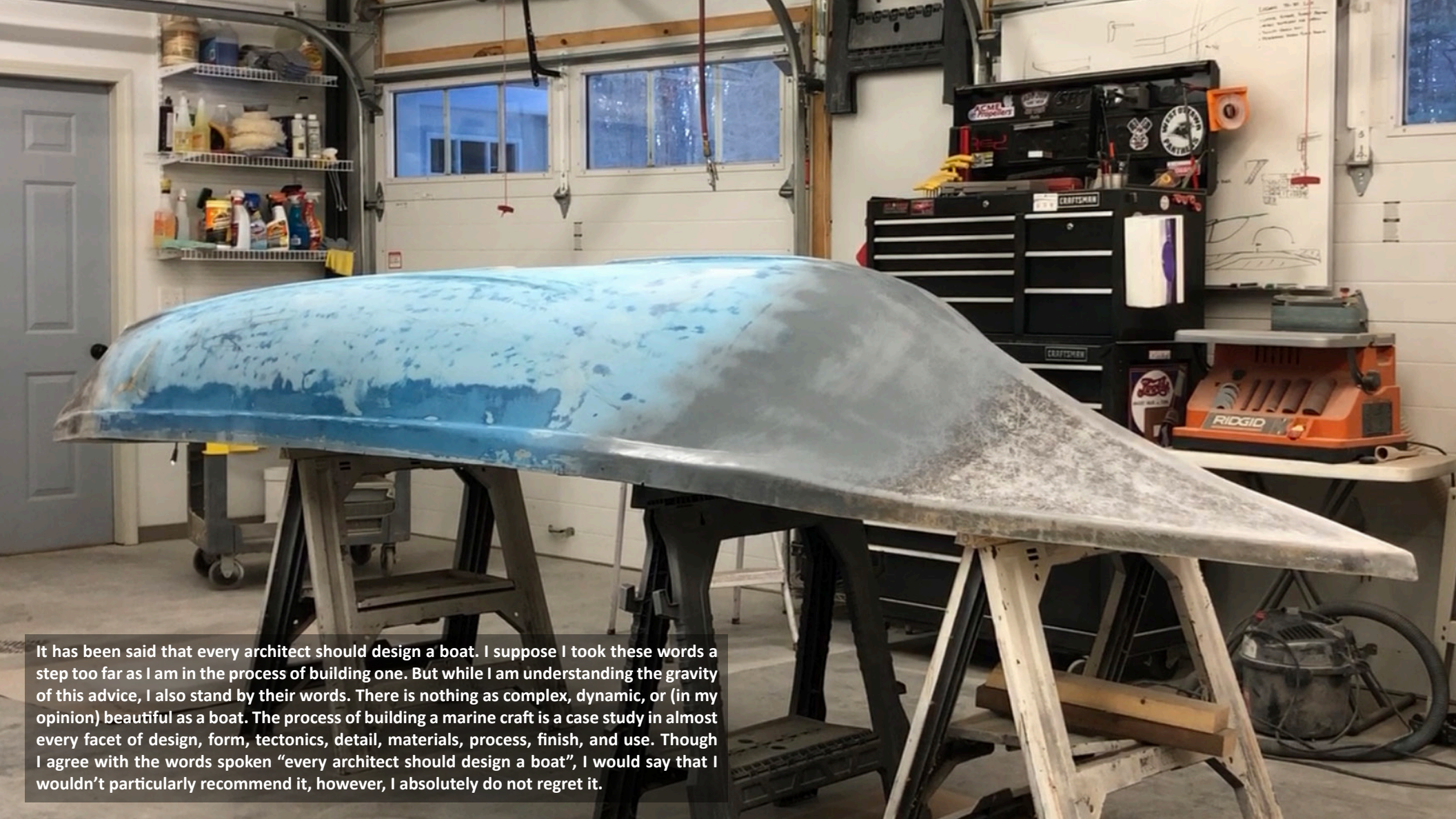


DIVISION AND BURTON MARKET DAY INSTALL.

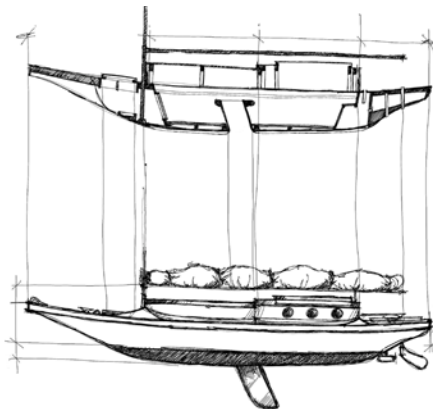
Panel park was a design competition within the Kendall College architecture program. The brief was to design a 'parklet' for the Division and Burton market day event. The color scheme and the site were provided along with enough building materials to create a typical parklet design. I considered what was the easiest and most effective way to define space with the materials provided. I developed a series of panels which were cut from the provided plywood and created a system of attachment. These modules were then arranged and rearranged in a variety of differing configurations to create a dynamic environment for the community attending the market day event to explore. As a class we then developed and built the installation full scale along with plantings, local signage, and accompanying games which mimic the design.

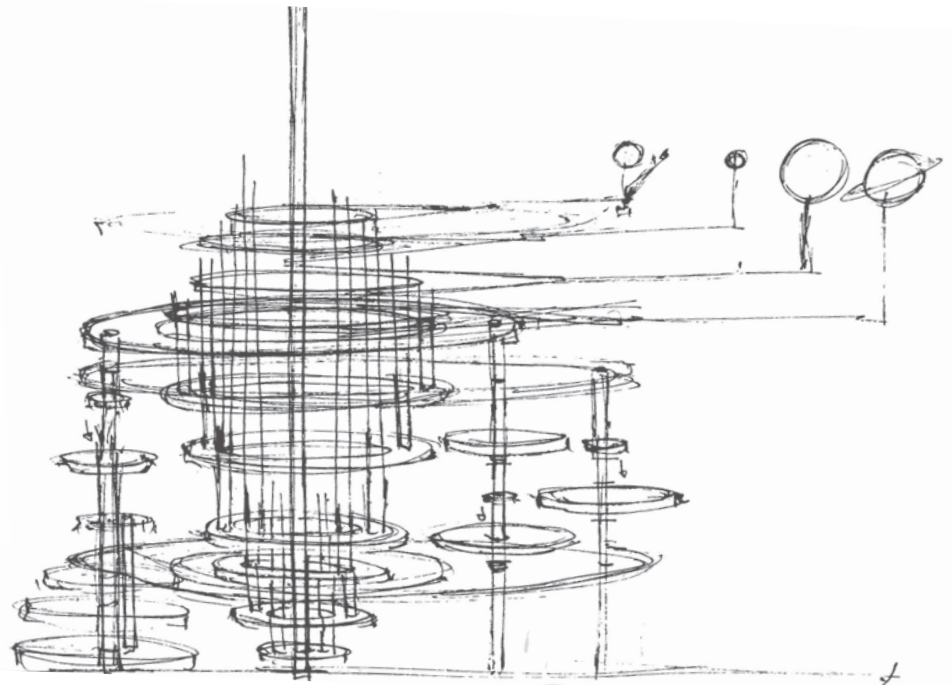
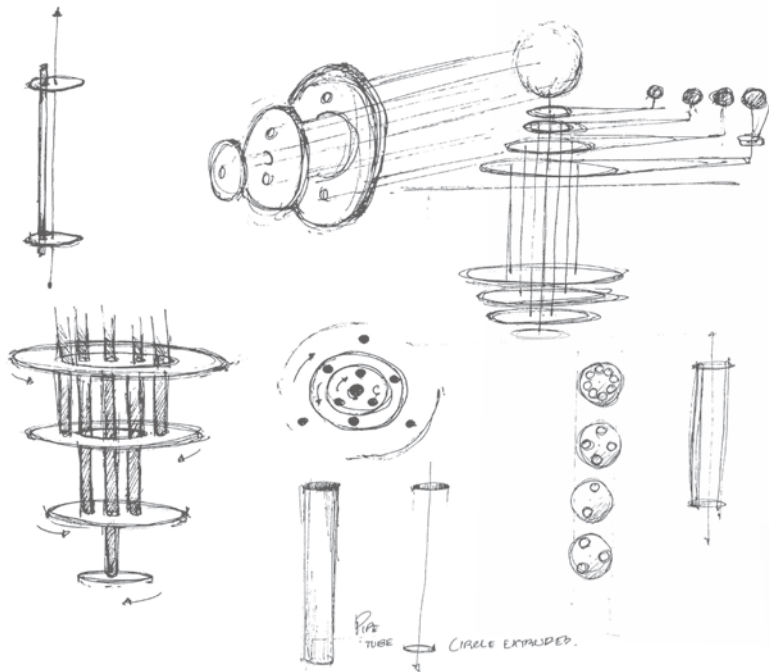






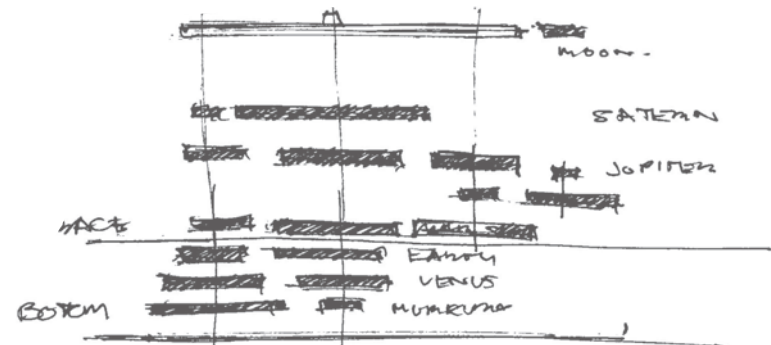
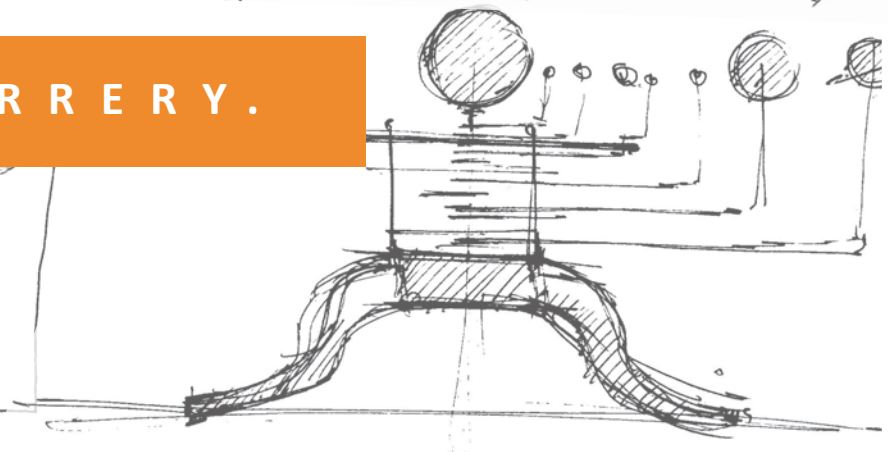
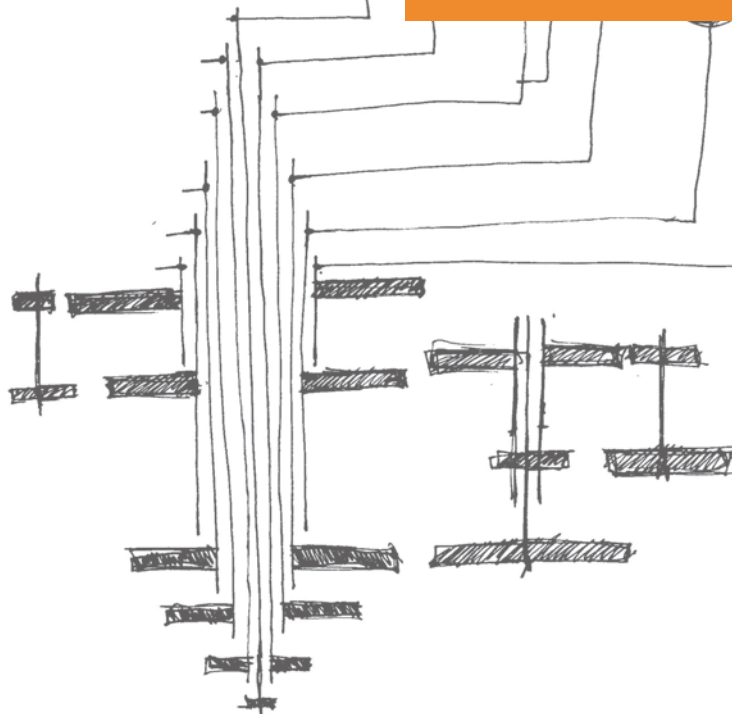
It has been said that every architect should design a boat. I suppose I took these words a step too far as I am in the process of building one. But while I am understanding the gravity of this advice, I also stand by their words. There is nothing as complex, dynamic, or (in my opinion) beautiful as a boat. The process of building a marine craft is a case study in almost every facet of design, form, tectonics, detail, materials, process, finish, and use. Though I agree with the words spoken “every architect should design a boat”, I would say that I wouldn’t particularly recommend it, however, I absolutely do not regret it.

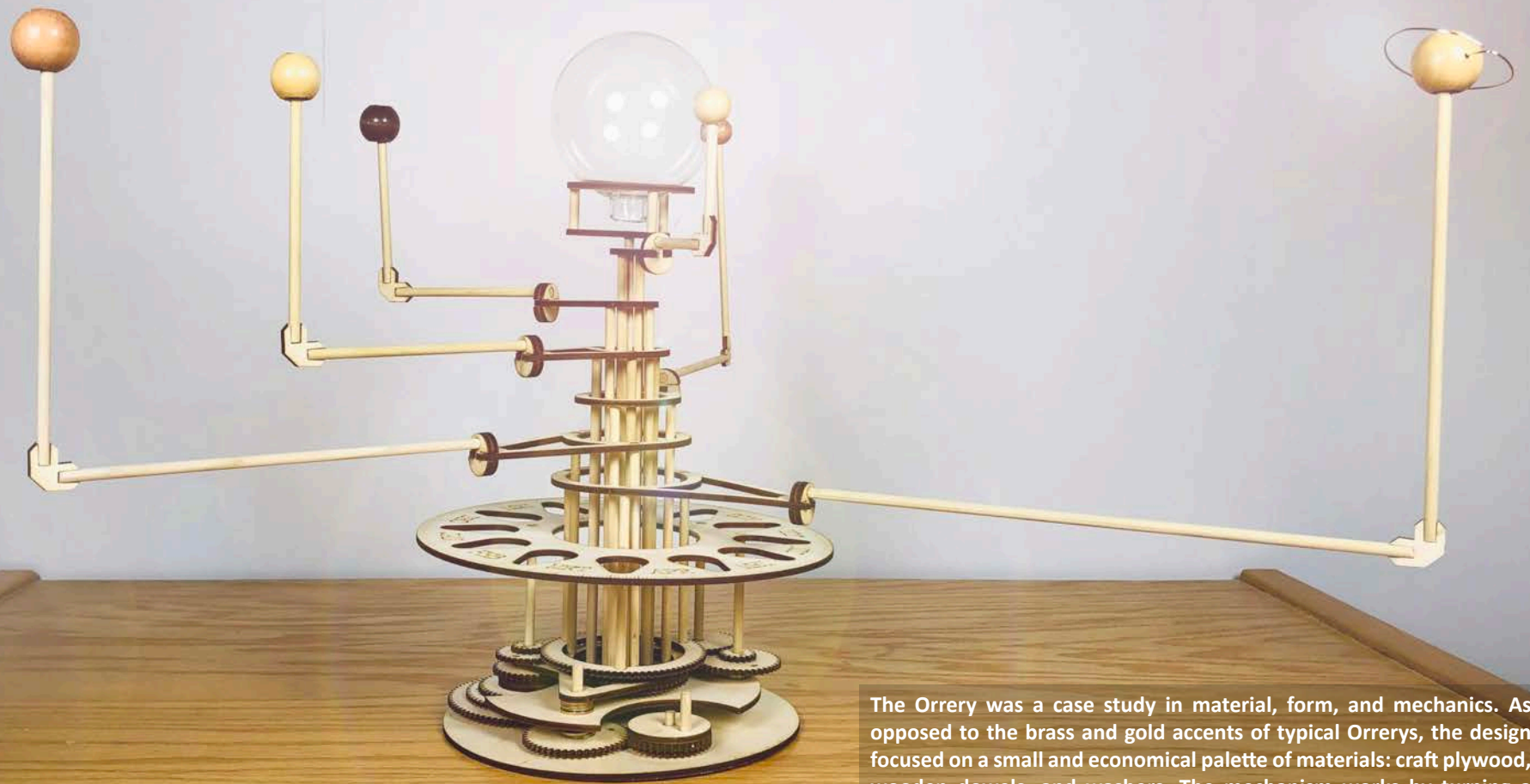




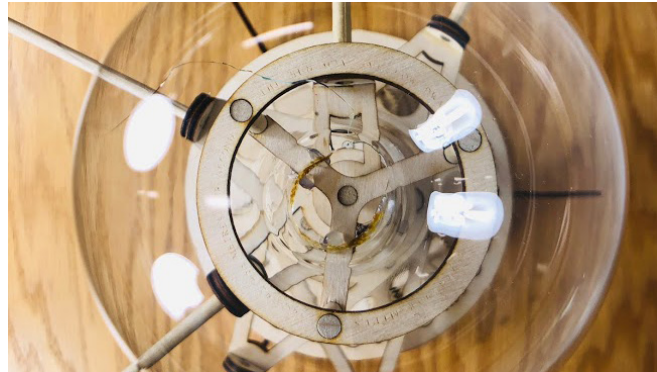
BOTTOM

THE ORRERY.





The Orrery was a case study in material, form, and mechanics. As opposed to the brass and gold accents of typical Orrerys, the design focused on a small and economical palette of materials: craft plywood, wooden dowels, and washers. The mechanism works by turning a small crank on the base of the model causing the special designed interior to rotate based on the position and orbits of the planets.





T H A N K Y O U .

L O G A N P A U L W Y S E

16760 Rolling Oaks Lane
Holland MI, 49424
wyse.logan@gmail.com
616.283.8000



< Architectural Webfolio
<https://wyselogan.wixsite.com/mysite>